

Cuisinart®

Fully Automatic Coffee Machine

EM550U



Instruction
& Recipe
Booklet



Follow us @cuisinart_europe

For your safety and continued enjoyment of this product,
always read the instruction book carefully before using.

Contents

Safety Precautions 2

Features and Benefits..... 4

Control Panel 5

Accessory..... 6

Machine Installation 6

Preparing Your Espresso Machine.... 6

Further Setting 9

Cleaning & Maintenance 11

Troubleshooting 13

UK guarantee 14

Safety Precautions

These important safety precautions are critical part of the appliance. Please read them all carefully before using the appliance for the first time. You may keep the instructions for future reference or pass it to other users.

The appliance is designed for domestic use and may only be operated in accordance with these instructions for use.

Always handle with care and warn other users the potential danger.


DANGER: Misuse of the appliance can cause injury!

1. Check the mains voltage stated on the rating plate corresponds to the local electricity supply.
2. Unwind and straighten the power cord before using the appliance.
3. Place the appliance on a firm and steady surface.
4. The appliance must be used and rested on a stable surface.
5. Disconnect the appliance from mains

supply outlet under the following conditions:

- Before the water tank is filled with water
- Before removing any parts from the appliance or refit any parts on the appliance.
- Before cleaning or maintenance
- When the appliance is not working correctly
- After using the appliance

6. Empty the water tank if the appliance unused for long period.
7. Allow to cool before putting on or taking off parts, and before cleaning the appliance.
8. Always use cold water to make coffee. Warm water or other liquids could cause damage to the coffee maker.
9. If the power cord is damaged, it must be replaced by the manufacturer or its service agent or similarly qualified person to avoid any hazard.
10. Use the grinder for grinding coffee bean only.
11. Children shall not be playing with the appliance.
12. Always disconnect the appliance from the supply if it is left unattended and before assembling, disassembling or cleaning.
13. Appliance can be used by persons with reduced physical, sensory or mental capabilities or lack of experience and knowledge if they have been given supervision or instruction by a person concerning use of the appliance in a safe way and understand the hazards involved.
14. This appliance shall not be used by children. Keep the appliance and its cord out of reach of children.
15. This appliance is designed for household use only.
16. In order to avoid a hazard due to inadvertent resetting of the thermal cut-out, this appliance must not be supplied through an external switching device, such as a timer, or connected to a circuit that is regularly switched on and off by the utility.

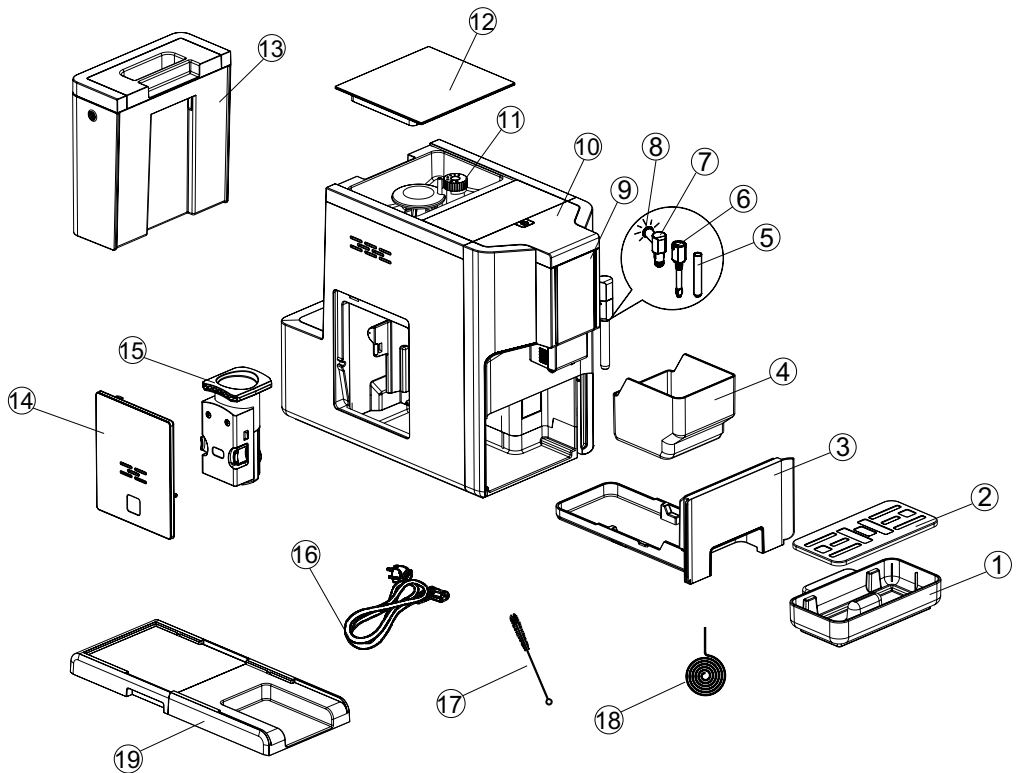
-
17. Children shall not play with the appliance. Cleaning and user maintenance shall not be made by children without supervision.
18. The appliance must be used at ambient temperatures of +10°C to +40°C.
19. Do not allow children to touch the appliance or the power cord during the operation.
20. Do not use an extension power cord set unless competent authority has approved it.
21. Do not leave the appliance unattended, when it is connected to main supply.
22. Do not use the appliance in outdoor environment.
23. Do not use appliance for other than intended use.
24. Do not let cord hang over the edge of table or counter or touch hot surface.
25. Do not use or place the appliance on a wet or hot surface.
26. Do not use the appliance if the drip tray is improperly placed in position.
27. Do not immerse the appliance in water or any liquids.
28. Do not use the appliance when any parts of the appliance are damaged.
29. Do not use the appliance when it is not working properly.
30. Do not unplug the appliance by pulling the power cord.
31. Do not place the cord on a sharp edge of an item.
32. Do not attempt to open the main body or dismantle any parts from the appliance, there is no serviceable part inside.
33. The appliance normally cleans after use and not intended to be immersed in water for cleaning and the appliance must not be immersed.
34. The use of accessories not included in the box is not recommended. It might be dangerous and should be avoided.
35. Do not place the appliance on or near hot gas or electric burner, or in heated oven.
36. Do not operate the hot water function continuously for more than one tank of water.
37. Do not be placed in a cabinet when in use.
38. This appliance is for indoor, domestic use only and is not intended to be used in applications such as: staff kitchen areas in shops, offices and other working environments; farmhouses; by customers in hotels, motels and other residential type environments; bed and breakfast type establishments.
- 39. CAUTION: BURN HAZARD**
WARNING: very hot surfaces. DO NOT TOUCH hot surfaces as possible injury could occur. Always use the handle. Use extra care when working with hot liquids to avoid injury from overflowing, steaming and splattering. Dispensed drinks and escaping steam are very hot
40. THIS IS AN ATTENDED APPLIANCE. Do not leave unattended during use, unplug after each use. Never leave the appliance unattended when switched on or plugged in
- 
- For electrical products Solid within the European Community.
- At the end of the electrical product useful life, it should not be disposed of with household waste. Please recycle where facilities exist. Check with your Local Authority or retailer for recycling advice in your country.
-

Save These Instructions

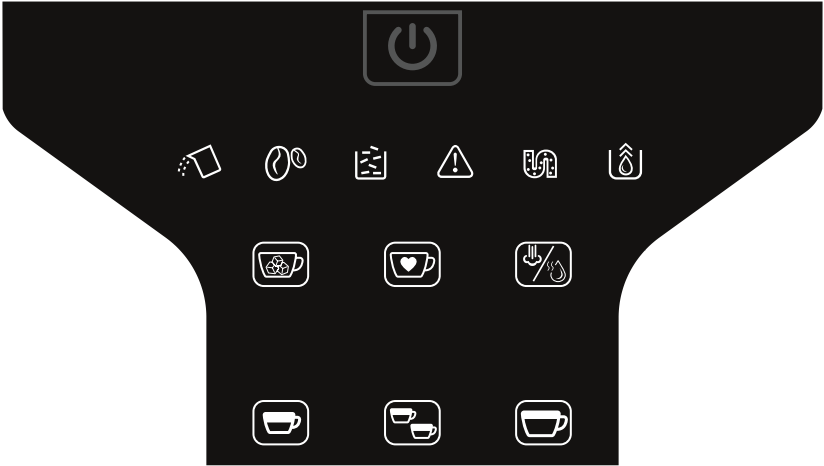
For Household Use Only

Features and Benefits

- | | |
|-----------------------------|---------------------------------|
| 1. External drip tray | 10. Control panel |
| 2. Drip tray cover | 11. Coffee bean container |
| 3. Internal drip tray | 12. Coffee bean container cover |
| 4. Coffee grounds container | 13. Water tank |
| 5. Metal tube | 14. Service door |
| 6. Steam nozzle | 15. Brewer |
| 7. Nozzle cover | 16. Power cord |
| 8. Steam indicator light | 17. Cleaning brush |
| 9. Adjustable coffee spout | 18. Needle |
| | 19. Height adjustment base |



Control Panel



Flashing: low water level/ water tank missing



Flashing: Low beans / missing beans



Solid illumination: coffee grounds container is full
Flashing: internal drip tray/coffee grounds container is missing



Solid illumination: brewer is missing/ installed improperly
Flashing: service door is opened / installed improperly



Solid illumination: requires descaling
Flashing: descaling is in process



Empty system function is in process



Power on/off button



Espresso button



Double Espresso Button



Americano button



Steam/hot water button



Ambient brew button



Favourite function button

Accessory

In the box, three packs of cleaning agents are included for the process of descaling.


Machine Installation

1. Remove any protective films, stickers and other packing materials on the appliance.
2. Choose a safe and stable surface with an easily reachable power supply.
3. The height adjustment base can be added underneath the base to accommodate travel mugs.
4. Insert the external drip tray to the machine until it is secured.
5. Fill the water tank with water (see "Filling Water Tank").
6. Fill the container with coffee beans (see "Filling Bean Container").
7. Unwind and straighten the power cord. Insert the plug into the socket located on the back of the machine, then insert the other end of the power cord into a wall socket of 220-240V.

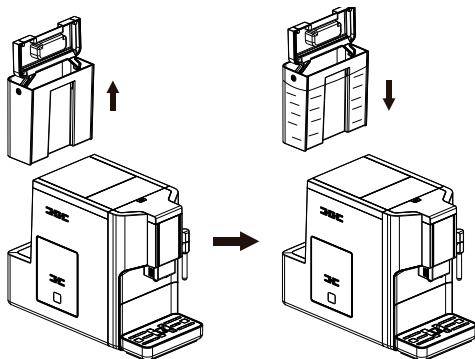
NOTE: Press Hot Water button (see "Manual Rinsing") to clean inside of the coffee machine before the first use.

Preparing Your Espresso Machine

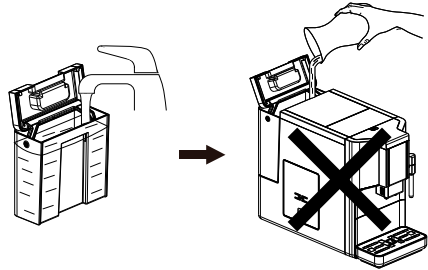
Filling Water Tank

When  is flashing, the water level is low and the tank needs filling up.

1. Lift the water tank using the lid as a handle.
2. Rinse the water tank with fresh water. Fill the tank to the Max level and place it back into the machine. Make sure it is installed properly.

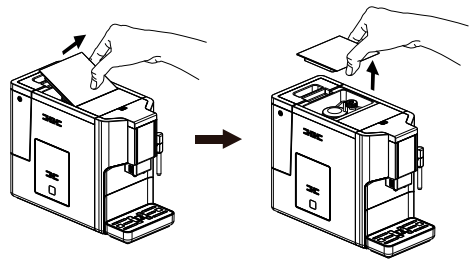



NOTE: To prevent overflowing the water tank, do not add water directly into the appliance.



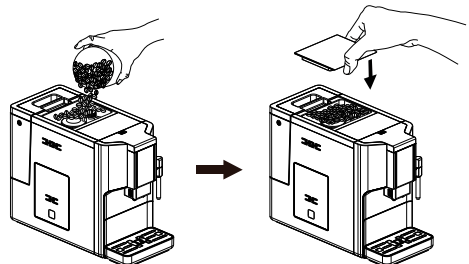
IMPORTANT: Never fill the water tank with warm, hot, sparkling water or other liquids which may damage the water tank and machine.

Filling Bean Container




When  is flashing, the appliance requires to be filled with coffee beans:

1. Remove the bean container lid.
2. Fill the bean container with coffee beans.
3. Install the container lid.





IMPORTANT: Fill the bean container with coffee beans only. Grounded, instant, caramelised coffee or other objects may damage the machine.

Preparing Hot Coffee

1. Switch on the appliance by pressing the Power ON/OFF button . Make sure the drip tray is placed under the coffee spout and the water tank is inserted with water inside. The appliance will perform auto-rinsing through the steam nozzle and then coffee nozzle, you can stop it by pressing




2. The appliance is then in the standby mode.
3. Place a cup under the coffee spout and adjust the height of the spout to fit the cup. Depending on the cup size, the drip tray can be removed and height adjustment base added.
4. Choose your coffee by pressing the Espresso  or Americano  button.
5. The button selected will light up and the under spout will illuminate indicating that the appliance is preparing the cup of coffee. You can stop dispensing coffee by pressing the button again at any time.
6. When the appliance is back to standby mode, the coffee is ready to serve.

TIP: Coffee button volumes can be adjusted (see “Adjusting Coffee/Hot Water Volume”).

NOTE: Use the Hot Water function to clean inside of the coffee maker before first use.

Preparing Ambient Brew Coffee


You can prepare Ambient Brew coffee with a single press.

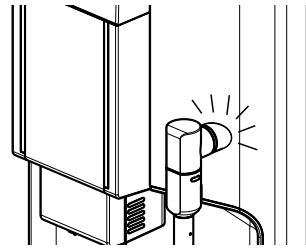
1. Put a glass with ice (optional) under the spout.
2. Press Ambient Brew button . Both the button and indicator will light up showing that the appliance is preparing the cup of coffee. Coffee will be dispensed and complete in under 5 minutes.
3. Preparation will stop automatically. If you want to stop dispensing coffee during operation, press the Ambient Brew button again.

NOTE: The coffee volume of Ambient Brew is fixed and cannot be adjusted by the user.


Preparing Two Cups of Espresso

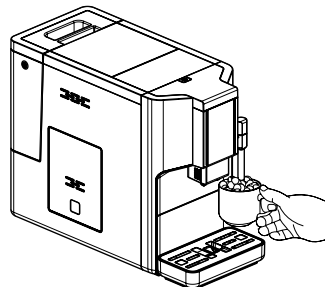
You can prepare two cups of espresso with one button.

1. Put one cup under the spout or two small cups under each side of the spout.
2. Press the Double Espresso button . Two cups of coffee will be dispensed consecutively one after another.
3. Preparation will stop automatically. If you want to stop dispensing coffee during operation, press the button again.




Preparing Frothy Milk

1. Prepare the coffee with a larger cup. Turn the steam nozzle toward the drip tray.
2. Press the Steam/Hot Water button  once. The Steam indicator light will flash indicating the appliance is heating up. Drain the residual water into the external drip tray or another container.
3. When ready, the Steam/Hot Water indicator light will solidly illuminate. Prepare a container with milk. Place the container under the steam nozzle and immerse the end of the nozzle into the milk.
4. Press the steam/hot water button again to begin steaming. Swivel the container while steaming.



- When the milk is hot enough. Press the Steam/Hot Water button to stop.
- Use a damp cloth to clean the nozzle cover and metal tube (see “Daily Cleaning of the Coffee Machine”).
- Pour the hot frothy milk into the coffee and enjoy.


Preparing Hot Water

- Put a cup under the stream nozzle.
- Press the Steam/Hot Water button twice. Both the Steam/Hot Water button and indicator will light up to show the appliance is heating up water. 
- Preparation will stop automatically. If you want to stop hot water during operation, press the button again.

Favourite Function Setting

You can use Favourite function to memorise your desired volume of coffee.

To set up the Favourite button:

- Put a cup under the spout.
- Press and hold the Favourite button  for 2 seconds. The Espresso and Americano buttons will flash. Select your desired coffee, the chosen button will illuminate.
- Press and hold the button until your desired volume is achieved, then release the button to stop. Two beeps will sound to indicate that favourite has been saved.

To use the Favourite button:

- Put a cup under the spout.
- Press the Favourite button. The memorised favourite drink will be dispensed.

Daily Cleaning of the Coffee Machine

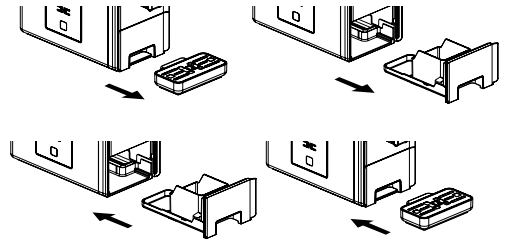
Timely cleaning and maintenance of the appliance is very important to prolong the life of the appliance.

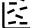
Cleaning Drip Tray and Coffee Grounds Container:

Empty and clean the drip tray every day.

- Pull the external drip tray out of the machine. Empty the water left in the drip tray and rinse with fresh water. Dry it afterwards.

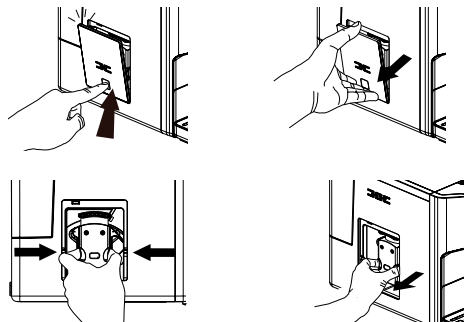
- Slides open internal drip tray and coffee ground container. Empty the coffee ground container and rinse with fresh water. Dry it afterwards.
- Place the coffee grounds container back into the internal drip tray and secure back into the machine.
- Secure the external drip tray at its original position.




NOTE: When accumulated to 10 cups,  will light up, which indicates that the coffee ground container needs to be emptied.


Cleaning Brewer

- Slightly press the bottom of the service door to open it.
- Take out the service door from the machine.
- Press the release catch on the brewer and take it out. Rinse it under the tap.
- Insert the brewer back to its original position. Put the service door back on the machine.




NOTE:

When  lights up stably, it indicates that the brewer is missing / installed improperly.

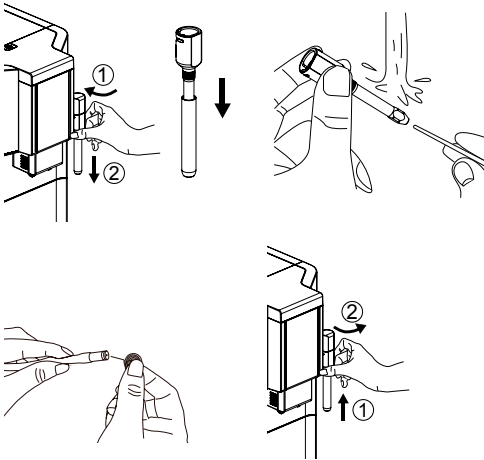
When  is flashing, it indicates that the

service door is missing / installed improperly.

When  is flashing, the coffee ground container is missing.

Cleaning Steam Wand

1. Unlock the nozzle cover by twisting anticlockwise.
2. Pull the metal tube downward to disassemble from the nozzle cover.
3. Wash both the nozzle cover and metal tube with warm running water. Use the needle or bristle of brush to clean the hole.
4. Reassemble the nozzle cover to the steam nozzle, and twist it clockwise to lock it.



Cleaning Water Tank

1. Lift the water tank out of the machine and rinse with fresh water.
2. Fill it with drinkable water up to the Max level. Put it back in the machine.

Turning Off the Machine

Switch off the appliance by pressing the Power ON/OFF button.

Automatic Shut-off

The appliance is equipped with auto shut-off. Depending on the mode you selected,

the appliance will have different auto shut-off times (see “Mode Selection”).

Further Setting

Adjusting Coffee/Hot Water Volume

The machine can memorise your desired volume of Espresso, Americano and Hot Water.

1. When making your coffee or dispensing hot water, press and hold the button you selected. The appliance will continue to make the cup of coffee or hot water.
2. When the volume of coffee or hot water meets your desired volume, release the button. Two beep sounds indicate the volume of coffee is memorised. For Double Espresso, the volume of the first and second cup are same.

Grinding Adjustment

You can adjust the grind level by turning the adjuster dial in the bean container. The dots on the dial indicate the fineness of grind.




WARNING: Never do the grinding adjustment when the grinder is not operating. It may damage the grinder.



Mode Selection

The machine has three different settings: default setting, ECO mode and speed mode. In ECO mode, the appliance helps to save more energy. In speed mode, the user can make their coffee faster than in default setting.

	Speed Mode	Default Setting	ECO Mode
Illumination Light	Yes	Yes	No
Pre-brewing*	No	Yes	Yes
Auto shut-off time	30 mins	20 mins	10 mins
Cup Volume memory	Yes	Yes	Yes


NOTE: The pre-brewing function moistens the grounded beans in the brewer with small amount of water before full extraction. This expands the coffee grounds to build up a greater pressure in brewer which help extraction of all the oils and full flavour from the grounded beans.




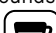
	Espresso Button 	Americano Button 	Hot Water Button 
In Speed Mode	Light ON	Flashing	Flashing
In Default Setting	Flashing	Light ON	Flashing
In ECO Mode	Flashing	Flashing	Light ON

1. When the machine is in standby, press and hold  for 5 seconds.
2. The power button will then be flashing. Buttons will show the above indications under different settings.
3. Press Espresso button for speed mode, Americano button for default setting and Hot Water button for ECO mode. Two Beep sounds indicate that the mode is being selected.
4. If you would like to keep the setting unchanged, press  again or wait for 5 seconds for the machine to return to standby.


Cleaning & Maintenance

Descaling


When  lights up stably, it indicates that the appliance needs descaling. The appliance will remain in the best condition if this function is performed at least once a month or more regularly depending on the hardness of water used.

1. Fill the water tank to MAX level.
 2. Add one pack of cleaning agent into the water tank.
- IMPORTANT:** Do not use vinegar or other cleaning agents to descale the appliance as it may cause damage.
3. Place a sufficient large container under the coffee spout.
 4. In standby condition, press and hold Power ON/OFF  and Espresso buttons  for 5 seconds. Two beep sounds will be heard,  and Espresso button  will be flashing.

5. Press Espresso button to confirm descaling process.

6.  will be flashing indicating that the appliance is descaling.

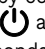

WARNING: Keep skin/body away from the hot water.


7. When all water in the water tank has been dispensed, the Espresso button  will be flashing.
8. Remove the remaining solution in the water tank and fill the tank with tap water to MAX level. When water tank is filled up, the light will go off. The appliance will continue the descaling process.
9. When the descaling process is completed, the appliance will switch off automatically.

NOTE: To ensure the descaling process can be completed, please be patient during the operation.

Empty System Function

The empty system function is recommended before storing, for frost protection or before taking to repair agent.

1. In standby condition, press and hold Power ON/OFF  and Americano buttons  for 5 seconds.

2.  will then be flashing.
3. Remove the water tank from the appliance, then the empty system is in process. The steam nozzle will dispense a small amount of water.
4. When the empty system function is completed, the appliance will switch off automatically.

IMPORTANT: After performing Empty System Function, press the Hot Water button until water dispense from steam nozzle when the machine is used again.

Manual Rinsing

You can perform a manual rinsing cycle to clean the coffee nozzle after use, or after the appliance has not been used for a long period of time.

1. In standby mode, press and hold Power ON/OFF and Steam/Hot Water buttons for 5 seconds.
2. Hot Water button will be flashing. The coffee nozzle will dispense a small amount of water.

WARNING: Hot water will be dispensed from coffee spout into external drip tray. Avoid contact with splashes of water.

3. After rinsing, the appliance will return to the standby mode.

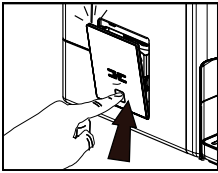
Cleaning the Appliance

1. Disconnect the power cord from the mains supply outlet.
2. Pour away all water in both the internal and external drip trays.
3. Use a dampened cloth or non-scratching cleaner to clean the water stains on the appliance.

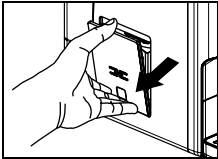
IMPORTANT: Never use any abrasive, vinegar or descaling agents not included in the box to clean the appliance.

Cleaning Coffee Powder Outlet

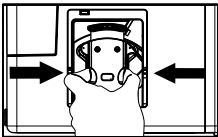
Clean the outlet by following the below steps to ensure coffee can be effectively delivered to the brewer.



1. Push the recess area of service door.



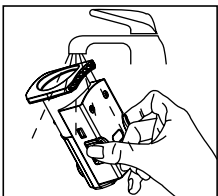
2. Take out the service door.



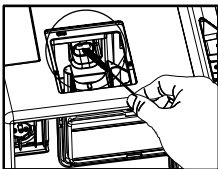
3. Press the release catch of brewer.



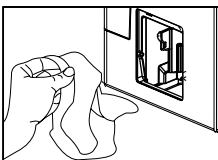
4. Take the brewer out.



5. Rinse the brewer under running water.
Let it dry completely before reassembling on the machine.



6. Use cleaning brush to clean the powder outlet and remove any coffee grounds or powder residues from the machine.



7. Use a cloth to clean inside of the machine thoroughly.
Dry completely before closing the side door.

Troubleshooting

PROBLEM	CAUSE	SOLUTION
The appliance does not work.	The appliance is not connected to the mains.	Plug in and press the Power ON/OFF button. Check the cable and the plug.
No or delayed response in several trials of pressing the function buttons on the panel.	Appliance is under an electromagnetic interference. Dirt over the panel.	Unplug the appliance. Restart after few minutes. Clean the panel with the cloth provided.
The coffee is not hot enough.	The cups have not been preheated. The brewing unit is too cold.	Rinse the appliance at least 3 times before making the coffee.
The coffee cannot come out from spout.	Empty system function maybe used before.	Press the Hot Water button until water can come out from spout.
The first cup of coffee is in poor quality.	The first run of grinder does not pour sufficient quantity of coffee power into the brewing unit.	Throw the coffee away. The other coffees will always be in good quality.
Coffee has no crema.	Coffee bean is not fresh.	Change or use appropriate brand of coffee bean.
The touch buttons are not sensitive.	Not pressing the touch buttons from the front direction of the appliance.	Press the lower bottom part of the icon of the touch button from the front direction of the appliance.
The appliance takes too long time to warm up.	Excessive scale has built up.	Descale the appliance.
The water tank is removed / the water level is very low in the water tank but  have no alert.	The area near the water tank connector is wet.	Wipe the water around the water tank connector.
Internal drip tray is filled with a lot of water.	Coffee powder is too fine which block the water to come out.	Adjust the coffee fineness to bigger dot during grinder operation.
Coffee is delivered too slowly or a drop at a time.	Coffee powder is too fine which block the water to come out.	Adjust the coffee fineness to bigger dot during grinder operation.
Lack of bean indicator flashes but there is still a lot of coffee bean inside the container.	Internal coffee powder outlet is blocked.	To follow the steps in “Cleaning Coffee Powder Outlet”.
Descaling indicator keep flashing even after the descaling process.	Decaling process is not completed.	Please be patient and wait for the process finish. The machine will shut off automatically. Do not switch off the machine manually.
Milk foam cannot be recreated by steam nozzle.	The nozzle is dirty and hole on nozzle cover or metal tube was broken by milk residues.	To follow the steps in “Daily Cleaning of the Coffee Machine” to clean steam nozzle.

UK Guarantee

Limited Two-Year Guarantee

This appliance is guaranteed for consumer use for 2 years and is only valid within the United Kingdom.

This guarantee covers consumer use only i.e. defects occurring under normal use within the home from date of purchase or date of delivery, whichever is later.

If the product develops a fault due to defects in materials or manufacture **within 12 months** from the date of purchase, to avoid delays and unnecessary inconvenience, where possible please return the product to the point of purchase for an exchange.

If the product develops a fault due to defects in materials or manufacture **after 12 months** from the date of purchase, and within the guarantee period, Conair UK After Sales Service will repair or replace the product.

Exclusions

This guarantee will no longer be valid meaning that The Conair Group Ltd will not be liable to repair or replace your product where:

1. The appliance has been used on a voltage supply other than that which is marked on the product, or advised within this instruction booklet
2. The appliance has been purchased from an unauthorised stockist*
3. The appliance is used for professional / non domestic usage
4. Repairs or alterations have been attempted by unauthorised persons
5. The failure of the appliance is a direct result of misuse
6. The failure is a result of not following the instructions for use

This guarantee does not cover any cosmetic damage due to misuse of the product nor any damage to persons or property that occurs because of product misuse.

*unauthorised stockists include, but are not limited to online auction sites, private sellers and those selling second hand

goods, refurbished products etc.

If you have any queries regarding this guarantee please contact the Conair Customer Care at support@cuisinart.co.uk or 03702 406 902.

It is important to retain your proof of purchase.

Even where a refund may be applicable, no refund will be provided without a valid receipt or proof of purchase, we will only be able to offer a repair or replacement service. Please note this does not apply if the product was purchased directly from The Conair Group Ltd.

Guarantees on replacement products run from the original purchase date or date of delivery, whichever is later, and **not** from the date of replacement.

This guarantee is an additional benefit and does not affect your statutory rights as a consumer.

For further advice on using the appliance or should you need to return your product, please contact the Conair Customer Care at support@cuisinart.co.uk or 03702 406 902.

UK After Sales Service

For further advice on using the appliance or should you need to return your product, swap email and phone around so email is first. Also remove times for phones.

Return address:
Customer Care Centre
Conair Logistics
Unit 4, Revolution Park
Buckshaw Avenue
Buckshaw Village
Chorley
PR7 7DW

Please enclose your returns number, name and address details, together with a copy of proof of purchase and details of the fault.

Please note this Instruction Booklet is not the guarantee.

This image shows a single sheet of white paper with horizontal ruling lines. The lines are evenly spaced and run across the width of the page. There are no margins, text, or other markings on the paper.

www.cuisinart.co.uk



Scan to get started with your coffee machine